

CURTIS ASSEMBLE & TEST LIMITED

HECKWORTH CLOSE
COLCHESTER BUSINESS PARK
COLCHESTER, ESSEX. CO4 9TB
UNITED KINGDOM



+44 (0)1206 845414



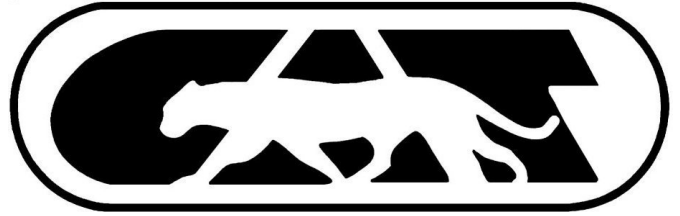
+44 (0)1206 845413



enquiries@curtisassembleandtest.com



www.curtisassembleandtest.com



CURTIS WASH MODULE

Description:

The system consists of one or two wash heads connected flexibly to a service unit which has a cleaning fluid tank, high pressure pump, low pressure pump, mist suction and separation device, and two-stage filtration.

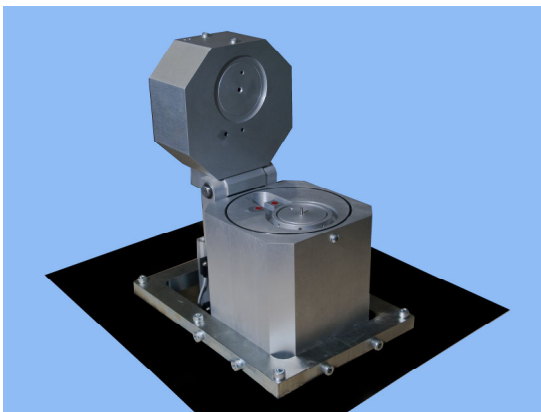
The high pressure is generated by a two-cylinder radial piston pump, generating approximately 100bar alternately in two separate supply ports at approximately 50Hz. These ports are connected to jets within the fixture such that the component receives alternating pulses from opposite ends. Some jets are directed to spin the component while the main jets are directed axially at each end of the component. An exhaust port is connected to an annular ring around the head of the component. The exhaust dirty cleaning fluid, or air and cleaning fluid, is collected by the suction unit which provides separation of the cleaning fluid and air, and low-level centrifuge to remove heavy debris from the cleaning fluid. The fluid passes from the centrifuge to a settling chamber. From here it is then circulated by the low-pressure pump through two filters (10 micron and 5 micron).

Operation:

The component to be cleaned is placed face downwards in the fixture part of the wash head, automatically or manually depending on the application. A pneumatic cylinder situated to the rear of the wash unit, for easy access, clamps the fixture shut. A safety guard must then be closed if loading is manual.

The Wash Cycle:

Controlled by a PLC as follows: Clamp; high-pressure wash; air blast; unclamp. A wash time of 10 second followed by air blast 5 seconds generally gives good results. One service unit can supply two wash fixtures, giving two parts every 20 seconds.



Wash Fixture



Power Pack

The cleaning fluid employed is ISO test oil. The standard system is not suitable for water based wash media. The cleanliness standard depends on the nature of the contamination in the components before washing, and the length of time taken for washing.

Specification:

- Pressure: Up to 100 bar
- Pressure Pulsation Frequency: 50Hz
- Flow Rate: Up to 4.4L/min
- Filtration: 10 and 5 microns